

Sweet



BTEC in Personal Growth and Wellbeing



edexcel 
Approved Centre from Pearson



 **BTEC**
Approved Centre from Pearson



What is Sweet?

Sweet is an **innovative and engaging resource** used to deliver a BTEC Level 1 and 2 qualification in Personal Growth and Wellbeing. Mapped against, and supporting the delivery of, the Health and Wellbeing AoLE and RSE new curriculum, Sweet teaches valuable skills to help students lead happier, healthier and more successful lives.

Available in both Welsh and English, Sweet creates engaging conversations about life's big issues, helping learners to gain a better knowledge of themselves and the world around them.

How is it delivered?

The **Sweet resource is flexible** and can be delivered through allocated PSE time, registration time, core subjects (including maths, science, and PE), or even as a standalone option choice.

Centres can choose from our brand new e-Sweet platform, for a **fully digital** teaching and learning experience, our **classic workbooks** for classroom based learning, or even choose a **blended** approach with workbooks and e-Sweet. Sweet can also be adapted for all learners, and learning outcomes can be evidenced in alternative formats.

Why choose Sweet?

Over 95% of learners who are registered on Sweet **achieve the qualification.** More than 8000 pupils, and 200 centres across Wales and England find the programme highly engaging. These include secondary schools, pupil referral units, youth services, mental health hospitals and special schools.

Who is Sweet for?

Sweet has been designed with secondary school learners in mind, although it can be **completed by anyone over the age of 14.**



Units



Book 1 Physical Health & Wellbeing

Fitter, Healthier, Happier



Book 2 Emotional Wellbeing

I've Got a Feeling



Book 3 Social Health & Wellbeing

Skills for Social Success



Book 4 Sexual Health & Wellbeing

Let's Talk About...



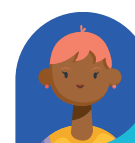
Book 5 Personal Identity

This is Me!



Book 6 Environmental Awareness

Our World, Our Future



Book 7 Financial Awareness

Making Money Work for Me!



Book 8 Personal Progress

Future Roles and Setting Goals

Level of study	Performance points	GCSE size equivalent	Grade equivalent	QiW Ref. No.	Units to complete
Level 2 Extended Certificate	92	2	A*-C	603/6005/7	8 units
Level 2 Certificate	46	1	A*-C	603/6004/5	5 optional units
Level 2 Award	23	0.5	A*-C	603/6003/3	2 optional units
Level 2 Subsidiary Award	11.5	0.25	A*-C	603/6002/1	1 optional unit
Level 1 Extended Certificate	50	2	D-G	603/6127/X	7 optional units
Level 1 Certificate	25	1	D-G	603/6126/8	4 optional units
Level 1 Award	12.5	0.5	D-G	603/6125/6	2 optional units
Level 1 Subsidiary Award	6.25	0.25	D-G	603/6124/4	1 optional unit

"We love the Sweet programme! It has everything that we need to cover to help develop our students into well rounded individuals. It fully supports the development of students in an engaging way, and the topic areas make pupils more aware of how choices we make impact on ourselves and the world around us."

St martin's School

Resources

Workbooks	£21.95
e-Sweet	£17.95
Workbooks + e-Sweet	£29.95

Registration + Certification fees

Sweet offers a fully managed service, which includes all:

- Administration
- Registration
- Verification
- Accreditation and certification responsibilities
- Internal verifier visits
- Ongoing online, email and telephone support
- Two centre visits

Extended Certificate	£91
Certificate	£66
Award	£37
Subsidiary Award	£22
No Hidden Costs	

"The Llwyddo/Sweet course lends itself well as an option choice. It's a great course which helps students develop life skills."

*Ysgol Gyfun Gwyr,
Swansea*

Training

Online training session held via Microsoft Teams. The 3-hour session provides a comprehensive overview of the qualifications and the administration requirements.

£275.00 Per Person

"Completing the Sweet project truly changed my life for the better. I would recommend it to any student as it is easy to understand, relevant and enjoyable."

Kylie, Sweet Learner

Prices may be subject to VAT and postage costs.

**Success
is Sweet**



Next Steps

To request more information or to schedule a visit to discuss your interests and requirements, please get in touch:



info@sweet.education
07874 869690